

LEAD-FREE PIPE MOVEMENT

Lead (Pb on the Periodic Table) is one of the most naturally occurring elements on the planet. With little or no known biological benefit to humans, Lead causes a lot of damage and leads to poisoning when imbibed.

The lead can easily leach or dissolve into the water from transportation pipes and can be fatal. High blood lead levels in children can cause consequences which may be irreversible including learning disabilities, behavioural problems and mental retardation.

SAFE PIPING MATERIAL FOR DRINKING WATER

FIELDS OF APPLICATIONS

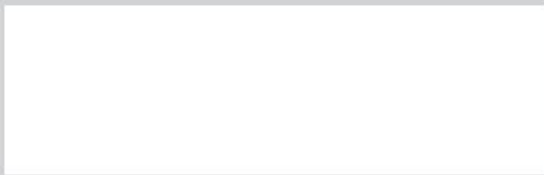
- Ring lines / Down take lines
- Swimming pools
- Pipes for hand pumps
- Salt water lines
- Sugar and paper industries
- Industrial process lines
- Aggressive / corrosive fluid transportation
- Coal washing and ash handling



FEATURES & BENEFITS

- Strong and Light Weight
- Durable
- Simple and Leak-Proof Joints
- Maximum Flow Rate
- Good Insulator
- Chemical Resistance

UV STABILIZED



AVAILABLE SIZE

SCH 80: 1.5 cm (1/2") to 30.0 cm (12") (IPS) As per ASTM D1785, D2467



uPVC PRESSURE PIPES

AS PER ASTM D1785

PIPE
SCHEDULE - 80
(3 MTR. LENGTH)

HSN CODE: 3917

Size (cm)	Size (inch)	Product Code	Std. Pkg. (Nos.)
1.5	½	M051800301	50
2.0	¾	M051800302	30
2.5	1	M051800303	20
3.2	1¼	M051800304	15
4.0	1½	M051800305	10
5.0	2	M051800306	08
6.5	2½	M051800307	05
8.0	3	M051800308	03
10.0	4	M051800309	02
15.0	6	M051800310	01
20.0	8	M051800311	01
25.0	10	M051800312	01
30.0	12	M051800313	01

PIPE
SCHEDULE - 80
(6 MTR. LENGTH)

HSN CODE: 3917

Size (cm)	Size (inch)	Product Code	Std. Pkg. (Nos.)
1.5	½	M051800601	30
2.0	¾	M051800602	20
2.5	1	M051800603	15
3.2	1¼	M051800604	10
4.0	1½	M051800605	10
5.0	2	M051800606	06
6.5	2½	M051800607	05
8.0	3	M051800608	03
10.0	4	M051800609	02
15.0	6	M051800610	01
20.0	8	M051800611	01
25.0	10	M051800612	01
30.0	12	M051800613	01

uPVC PRESSURE FITTINGS

SCHEDULE 80 AS PER ASTM D2467



Size (cm)	Size (inch)	Product Code	Std. Pkg. (Nos.)
1.5	½	M052801001	400
2.0	¾	M052801002	300
2.5	1	M052801003	150
3.2	1¼	M052801004	80
4.0	1½	M052801005	70
5.0	2	M052801006	50
6.5	2½	M052801007	20
8.0	3	M052801008	15
10.0	4	M052801009	12
15.0	6	M052801010	02
20.0	8	M052801011	01
25.0	10	M052801012	01
30.0	12	M052801013	01



Size (cm)	Size (inch)	Product Code	Std. Pkg. (Nos.)
1.5	½	M052802301	400
2.0	¾	M052802302	200
2.5	1	M052802303	150
3.2	1¼	M052802304	80
4.0	1½	M052802305	60
5.0	2	M052802306	30
6.5	2½	M052802307	20
8.0	3	M052802308	12
10.0	4	M052802309	06
15.0	6	M052802310	02
20.0	8	817-080*	As Req.
25.0	10	817-100*	As Req.
30.0	12	817-120*	As Req.



Size (cm)	Size (inch)	Product Code	Std. Pkg. (Nos.)
1.5	½	M052800501	300
2.0	¾	M052800502	200
2.5	1	M052800503	125
3.2	1¼	M052800504	60
4.0	1½	M052800505	50
5.0	2	M052800506	25
6.5	2½	M052800507	15
8.0	3	M052800508	10
10.0	4	M052800509	05
15.0	6	M052800510	02
20.0	8	M052800511	01
25.0	10	806-100*	As Req.
30.0	12	806-120*	As Req.



Size (cm)	Size (inch)	Product Code	Std. Pkg. (Nos.)
1.5	½	M052800101	200
2.0	¾	M052800102	125
2.5	1	M052800103	70
3.2	1¼	M052800104	40
4.0	1½	M052800105	30
5.0	2	M052800106	15
6.5	2½	M052800107	12
8.0	3	M052800108	07
10.0	4	M052800109	04
15.0	6	M052800110	02
20.0	8	M052800111	01
25.0	10	801-100*	As Req.
30.0	12	801-120*	As Req.



CROSS - SOC

HSN CODE: 3917

Size (cm)	Size (inch)	Product Code	Std. Pkg. (Nos.)
1.5	½	*820-005	As Req.
2.0	¾	M052802402	50
2.5	1	M052802403	50
3.2	1¼	M052802404	30
4.0	1½	M052802405	25
5.0	2	M052802406	15
6.5	2½	M052802407	09
8.0	3	M052802408	06
10.0	4	820-040*	As Req.
15.0	6	820-060F*	As Req.
20.0	8	820-080F*	As Req.



FAPT - uPVC THREAD

HSN CODE: 3917

Size (cm)	Size (inch)	Product Code	Std. Pkg. (Nos.)
1.5	½	M052801601	600
2.0	¾	M052801602	400
2.5	1	M052801603	200
3.2	1¼	M052801604	100
4.0	1½	M052801605	80
5.0	2	M052801606	50
6.5	2½	M052801607	30
8.0	3	M052801608	20
10.0	4	M052801609	12
15.0	6	835-060*	As Req.
20.0	8	835-080*	As Req.



MAPT - uPVC THREAD

HSN CODE: 3917

Size (cm)	Size (inch)	Product Code	Std. Pkg. (Nos.)
1.5	½	M052801301	600
2.0	¾	M052801302	400
2.5	1	M052801303	250
3.2	1¼	M052801304	150
4.0	1½	M052801305	100
5.0	2	M052801306	60
6.5	2½	M052801307	30
8.0	3	M052801308	20
10.0	4	M052801309	15
15.0	6	836-060*	As Req.
2.0 x 1.5	¾ x ½	M052801314	400



UNION - SOC

HSN CODE: 3917

Size (cm)	Size (inch)	Product Code	Std. Pkg. (Nos.)
1.5	½	M052802601	200
2.0	¾	M052802602	120
2.5	1	M052802603	80
3.2	1¼	M052802604	50
4.0	1½	M052802605	80
5.0	2	M052802606	30
6.5	2½	M052802607	15
8.0	3	M052802608	10
10.0	4	M052802609	04
15.0	6	897-060*	As Req.

uPVC PRESSURE FITTINGS

SCHEDULE 80 AS PER ASTM D2467



Size (cm)	Size (inch)	Product Code	Std. Pkg. (Nos.)
1.5	½	M052804101	800
2.0	¾	M052804102	500
2.5	1	M052804103	300
3.2	1¼	M052804104	150
4.0	1½	M052804105	100
5.0	2	M052804106	60
6.5	2½	M052804107	40
8.0	3	M052804108	25
10.0	4	M052804109	18
15.0	6	M052804110	15
20.0	8	847-080*	As Req.
25.0	10	847-100F*	As Req.
30.0	12	847-120F*	As Req.



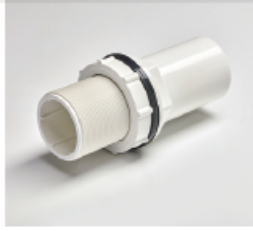
Size (cm)	Size (inch)	Product Code	Std. Pkg. (Nos.)
2.0	¾	M0528010202	75
2.5	1	M0528010203	60
3.2	1¼	M0528010204	70
4.0	1½	M0528010205	60
5.0	2	M0528010206	35



Size (cm)	Size (inch)	Product Code	Std. Pkg. (Nos.)
1.5	½	M052806501	200
2.0	¾	M052806502	140
2.5	1	M052806503	80
3.2	1¼	M052806504	40
4.0	1½	M052806505	30
5.0	2	M052806506	20



Size (cm)	Size (inch)	Product Code	Std. Pkg. (Nos.)
1.5	½	M052402501	80
2.0	¾	M052402502	60
2.5	1	M052402503	40
3.2	1¼	M052402504	30
4.0	1½	M052402505	20
5.0	2	M052402506	15



**TANK ADAPTOR
(LONG)
(THDxSPG)**

HSN CODE: 3917

Size (cm)	Size (inch)	Product Code	Std. Pkg. (Nos.)
1.5	½	F052806501	80
2.0	¾	F052806502	60
2.5	1	F052806503	40
3.2	1¼	F052806504	18
4.0	1½	F052806505	12
5.0	2	F052806506	08
6.5	2½	F052806507	15
8.0	3	F052806508	09



**REDUCER ELBOW
SOC**

HSN CODE: 3917

Size (cm)	Size (inch)	Product Code	Std. Pkg. (Nos.)
2.0 x 1.5	¾ x ½	M052800614	250
2.5 x 1.5	1 x ½	M052800615	150
2.5 x 2.0	1 x ¾	M052800616	150



**REDUCER
COUPLER-
SOC**

HSN CODE: 3917

Size (cm)	Size (inch)	Product Code	Std. Pkg. (Nos.)
2.0 x 1.5	¾ x ½	M052801114	300
2.5 x 1.5	1 x ½	M052801115	250
2.5 x 2.0	1 x ¾	M052801116	200
3.2 x 1.5	1¼ x ½	M052801117	150
3.2 x 2.0	1¼ x ¾	M052801118	140
3.2 x 2.5	1¼ x 1	M052801119	125
4.0 x 1.5	1½ x ½	M052801120	125
4.0 x 2.0	1½ x ¾	M052801121	100
4.0 x 2.5	1½ x 1	M052801122	100
4.0 x 3.2	1½ x 1¼	M052801123	80
5.0 x 1.5	2 x ½	M052801124	70
5.0 x 2.0	2 x ¾	M052801125	70
5.0 x 2.5	2 x 1	M052801126	75
5.0 x 3.2	2 x 1¼	M052801127	60
5.0 x 4.0	2 x 1½	M052801128	50
6.5 x 3.2	2½ x 1¼	M052801132	48
6.5 x 4.0	2½ x 1½	M052801133	40
6.5 x 5.0	2½ x 2	M052801134	40
8.0 x 4.0	3 x 1½	M052801139	27
8.0 x 5.0	3 x 2	M052801140	25
8.0 x 6.5	3 x 2½	M052801141	25
10.0 x 4.0	4 x 1½	M052801146	16
10.0 x 5.0	4 x 2	M052801147	16
10.0 x 6.5	4 x 2½	M052801148	15
10.0 x 8.0	4 x 3	M052801149	15
15.0 x 5.0	6 x 2	829-528*	As Req.
15.0 x 6.5	6 x 2½	829-529*	As Req.
15.0 x 8.0	6 x 3	829-530*	As Req.
15.0 x 10.0	6 x 4	829-532*	As Req.
20.0 x 10.0	8 x 4	829-582*	As Req.
25.0 x 10.0	10 x 4	829-624F*	As Req.
25.0 x 15.0	10 x 6	829-626*	As Req.
25.0 x 20.0	10 x 8	829-628*	As Req.
30.0 x 20.0	12 x 8	829-668*	As Req.
30.0 x 25.0	12 x 10	829-670F*	As Req.

uPVC PRESSURE FITTINGS

SCHEDULE 80 AS PER ASTM D2467



Size (cm)	Size (inch)	Product Code	Std. Pkg. (Nos.)
2.0 x 1.5	¾ x ½	M052800214	150
2.5 x 1.5	1 x ½	M052800215	100
2.5 x 2.0	1 x ¾	M052800216	100
3.2 x 1.5	1¼ x ½	M052800217	60
3.2 x 2.0	1¼ x ¾	M052800218	60
3.2 x 2.5	1¼ x 1	M052800219	50
4.0 x 1.5	1½ x ½	M052800220	40
4.0 x 2.0	1½ x ¾	M052800221	40
4.0 x 2.5	1½ x 1	M052800222	40
4.0 x 3.2	1½ x 1¼	M052800223	30
5.0 x 1.5	2 x ½	M052800224	30
5.0 x 2.0	2 x ¾	M052800225	25
5.0 x 2.5	2 x 1	M052800226	20
5.0 x 3.2	2 x 1¼	M052800227	20
5.0 x 4.0	2 x 1½	M052800228	20
6.5 x 1.5	2½ x ½	A052800229	As Req.
6.5 x 2.0	2½ x ¾	A052800230	As Req.
6.5 x 2.5	2½ x 1	M052800231	15
6.5 x 3.2	2½ x 1¼	M052800232	15
6.5 x 4.0	2½ x 1½	M052800233	15
6.5 x 5.0	2½ x 2	M052800234	12
8.0 x 1.5	3 x ½	A052800235	As Req.
8.0 x 2.0	3 x ¾	A052800236	As Req.
8.0 x 2.5	3 x 1	M052800237	10
8.0 x 3.2	3 x 1¼	A052800238	As Req.
8.0 x 4.0	3 x 1½	M052800239	10
8.0 x 5.0	3 x 2	M052800240	09
8.0 x 6.5	3 x 2½	M052800241	09
10.0 x 1.5	4 x ½	A052800242	As Req.
10.0 x 2.0	4 x ¾	A052800243	As Req.
10.0 x 2.5	4 x 1	M052800244	05
10.0 x 3.2	4 x 1¼	M052800245	05
10.0 x 4.0	4 x 1½	M052800246	05
10.0 x 5.0	4 x 2	M052800247	05
10.0 x 6.5	4 x 2½	M052800248	05
10.0 x 8.0	4 x 3	M052800249	05



Size (cm)	Size (inch)	Product Code	Std. Pkg. (Nos.)
15.0 x 6.5	6 x 2½	M052800256	As Req.
15.0 x 8.0	6 x 3	M052800257	02
15.0 x 10.0	6 x 4	M052800258	02
20.0 x 15.0	8 x 6	A052800268	As Req.



Size (cm)	Size (inch)	Product Code	Std. Pkg. (Nos.)
1.5 x 1.5	½ x ½	M052800701	100
2.0 x 1.5	¾ x ½	M052800714	100
2.0 x 2.0	¾ x ¾	M052800702	75
2.5 x 1.5	1 x ½	M052800715	50
2.5 x 2.0	1 x ¾	M052800716	50
2.5 x 2.5	1 x 1	M052800703	50



Size (cm)	Size (inch)	Product Code	Std. Pkg. (Nos.)
1.5 x 1.5	½ x ½	M052800301	100
2.0 x 1.5	¾ x ½	M052800314	50
2.0 x 2.0	¾ x ¾	M052800302	50
2.5 x 1.5	1 x ½	M052800315	25
2.5 x 2.0	1 x ¾	M052800316	25
2.5 x 2.5	1 x 1	M052800303	30
3.2 x 1.5	1¼ x ½	M052800317	20



REDUCER BUSHING (FLUSH STYLE)

HSN CODE: 3917

Size (cm)	Size (inch)	Product Code	Std. Pkg. (Nos.)
2.0 x 1.5	¾ x ½	M052801914	300
2.5 x 1.5	1 x ½	M052801915	400
2.5 x 2.0	1 x ¾	M052801916	400
3.2 x 1.5	1½ x ½	M052801917	250
3.2 x 2.0	1½ x ¾	M052801918	250
3.2 x 2.5	1½ x 1	M052801919	250
4.0 x 1.5	1½ x ½	M052801920	150
4.0 x 2.0	1½ x ¾	M052801921	150
4.0 x 2.5	1½ x 1	M052801922	150
4.0 x 3.2	1½ x 1½	M052801923	150
5.0 x 1.5	2 x ½	M052801924	100
5.0 x 2.0	2 x ¾	M052801925	100
5.0 x 2.5	2 x 1	M052801926	100
5.0 x 3.2	2 x 1½	M052801927	100
5.0 x 4.0	2 x 1½	M052801928	100
6.5 x 3.2	2½ x 1½	M052801932	50
6.5 x 4.0	2½ x 1½	M052801933	50
6.5 x 5.0	2½ x 2	M052801934	50
8.0 x 2.5	3 x 1	A052801937	As Req.
8.0 x 3.2	3 x 1½	A052801938	As Req.
8.0 x 4.0	3 x 1½	M052801939	35
8.0 x 5.0	3 x 2	M052801940	35
8.0 x 6.5	3 x 2½	M052801941	35
10.0 x 5.0	4 x 2	M052801947	20
10.0 x 6.5	4 x 2½	M052801948	20
10.0 x 8.0	4 x 3	M052801949	20
15.0 x 8.0	6 x 3	A052801957	As Req.
15.0 x 10.0	6 x 4	M052801958	06
20.0 x 15.0	8 x 6	M052801968	03
25.0 x 10.0	10 x 4	837-624*	As Req.
25.0 x 15.0	10 x 6	837-626*	As Req.
25.0 x 20.0	10 x 8	837-628*	As Req.
30.0 x 15.0	12 x 6	837-666*	As Req.
30.0 x 20.0	12 x 8	837-668*	As Req.
30.0 x 25.0	12 x 10	837-670*	As Req.



MABT - BRASS THREAD

HSN CODE: 3917

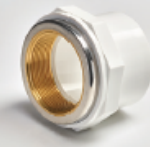
Size (cm)	Size (inch)	Product Code	Std. Pkg. (Nos.)
1.5	½	M052801401	250
2.0	¾	M052801402	150
2.5	1	M052801403	100
3.2	1½	M052801404	50
4.0	1½	M052801405	40
5.0	2	M052801406	20
6.5	2½	M052801407	09
8.0	3	M052801408	08
10.0	4	M052801409	As Req.



REDUCER MABT - BRASS THREAD

HSN CODE: 3917

Size (cm)	Size (inch)	Product Code	Std. Pkg. (Nos.)
2.0 x 1.5	¾ x ½	M052801414	150
2.5 x 1.5	1 x ½	M052801415	100
2.5 x 2.0	1 x ¾	M052801416	100



REDUCER FABT - BRASS THREAD

HSN CODE: 3917

Size (cm)	Size (inch)	Product Code	Std. Pkg. (Nos.)
2.0 x 1.5	¾ x ½	M052801714	100
2.5 x 1.5	1 x ½	M052801215	100
2.5 x 2.0	1 x ¾	M052801216	75

uPVC PRESSURE FITTINGS

SCHEDULE 80 AS PER ASTM D2467



**FABT -
BRASS THREAD**

HSN CODE: 3917

Size (cm)	Size (inch)	Product Code	Std. Pkg. (Nos.)
1.5	½	M052801701	100
2.0	¾	M052801702	100
2.5	1	M052801703	50
3.2	1¼	M052801704	40
4.0	1½	M052801705	30
5.0	2	M052801706	15
6.5	2½	M052801707	09
8.0	3	M052801708	07
10.0	4	M052801709	As Req.



**LONG RADIUS
BEND 90°
(SOC)**

HSN CODE: 3917

Size (cm)	Size (inch)	Product Code	Std. Pkg. (Nos.)
1.5	½	F052800901	120
2.0	¾	F052800902	As Req.
2.5	1	F052800903	As Req.
3.2	1¼	F052800904	As Req.
4.0	1½	F052800905	As Req.
5.0	2	F052800906	As Req.
6.5	2½	F052800907	As Req.
8.0	3	F052800908	As Req.
10.0	4	F052800909	04
15.0	6	F052800910	01



**BRASS
REDUCER BUSH**

HSN CODE: 3917

Size (cm)	Size (inch)	Product Code	Std. Pkg. (Nos.)
2.5 x 1.5	1 x ½	M052802015	250



**VANSTONE
FLANGE - SOC**

HSN CODE: 3917

Size (cm)	Size (inch)	Product Code	Std. Pkg. (Nos.)
1.5	½	M052803401	120
2.0	¾	M052803402	80
2.5	1	M052803403	60
3.2	1¼	M052803404	50
4.0	1½	M052803405	35
5.0	2	M052803406	25
6.5	2½	M052803407	15
8.0	3	M052803408	12
10.0	4	M052803409	08
15.0	6	M052803410	03
20.0	8	M052803411	01
25.0	10	854-100*	As Req.
30.0	12	854-120*	As Req.



**STEP OVER
BEND
(SOC)**

HSN CODE: 3917

Size (cm)	Size (inch)	Product Code	Std. Pkg. (Nos.)
1.5	½	F052802801	As Req.
2.0	¾	F052802802	As Req.
2.5	1	F052802803	As Req.
3.2	1¼	F052802804	As Req.
4.0	1½	F052802805	As Req.
5.0	2	F052802806	As Req.



**VANSTONE
FLANGE - SPIG**

HSN CODE: 3917

Size (cm)	Size (inch)	Product Code	Std. Pkg. (Nos.)
1.5	½	M052803301	As Req.
2.0	¾	M052803302	As Req.
2.5	1	M052803303	As Req.
3.2	1¼	M052803304	As Req.
4.0	1½	M052803305	As Req.
5.0	2	M052803306	As Req.
6.5	2½	M052803307	As Req.
8.0	3	M052803308	16
10.0	4	M052803309	06
15.0	6	856-060*	As Req.



**BALL VALVE -
SOC**

HSN CODE: 8481

Size (cm)	Size (inch)	Product Code	Std. Pkg. (Nos.)
1.5	½	M052802701	48
2.0	¾	M052802702	36
2.5	1	M052802703	16
3.2	1¼	M052802704	10
4.0	1½	M052802705	08
5.0	2	M052802706	06



Size (cm)	Size (inch)	Product Code	Std. Pkg. (Nos.)
1.5	1/2	M052402701	80
2.0	3/4	M052402702	100
2.5	1	M052402703	70
3.2	1 1/4	M052402704	40
4.0	1 1/2	M052402705	30
5.0	2	M052402706	15



Size (cm)	Size (inch)	Product Code	Std. Pkg. (Nos.)
1.5	1/2	910-041*	100
2.0	3/4	910-061*	100
2.5	1	910-081*	100
3.2	1 1/4	910-101*	100
4.0	1 1/2	910-121*	48
5.0	2	910-161*	24
6.5	2 1/2	910-171*	12
8.0	3	910-181*	12
10.0	4	910-201*	06

uPVC PRESSURE FITTINGS

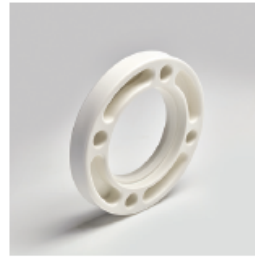
SCHEDULE 80 AS PER ASTM D2467



**BALL VALVE -
SPEARS**

HSN CODE: 8481

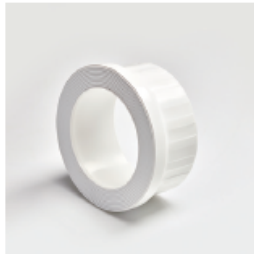
Size (cm)	Size (inch)	Product Code	Std. Pkg. (Nos.)
1.5	½	2622-005*	25
2.0	¾	2622-007*	25
2.5	1	2622-010*	10
3.2	1¼	2622-012*	10
4.0	1½	2622-015*	10
5.0	2	2622-020*	10
6.5	2½	2622-025*	05
8.0	3	2622-030*	03
10.0	4	2622-040*	01
15.0	6	2622-060*	01



FLANGE RING

HSN CODE: 3917

Size (cm)	Size (inch)	Product Code	Std. Pkg. (Nos.)
1.5	½	M052804201	As Req.
2.0	¾	M052804202	As Req.
2.5	1	M052804203	As Req.
3.2	1¼	M052804204	As Req.
4.0	1½	M052804205	As Req.
5.0	2	M052804206	As Req.
6.5	2½	M052804207	As Req.
8.0	3	M052804208	As Req.
10.0	4	M052804209	As Req.
15.0	6	M052804210	As Req.
20.0	8	M052804211	As Req.



**FLANGE HUB -
SOC**

HSN CODE: 3917

Size (cm)	Size (inch)	Product Code	Std. Pkg. (Nos.)
1.5	½	M052803601	As Req.
2.0	¾	M052803602	As Req.
2.5	1	M052803603	As Req.
3.2	1¼	M052803604	As Req.
4.0	1½	M052803605	As Req.
5.0	2	M052803606	As Req.
6.5	2½	M052803607	As Req.
8.0	3	M052803608	As Req.
10.0	4	M052803609	As Req.
15.0	6	M052803610	As Req.
20.0	8	M052803611	As Req.



**FLANGE HUB -
SPG**

HSN CODE: 3917

Size (cm)	Size (inch)	Product Code	Std. Pkg. (Nos.)
1.5	½	M052803701	As Req.
2.0	¾	M052803702	As Req.
2.5	1	M052803703	As Req.
3.2	1¼	M052803704	As Req.
4.0	1½	M052803705	As Req.
5.0	2	M052803706	As Req.
6.5	2½	M052803707	As Req.
8.0	3	M052803708	As Req.
10.0	4	M052803709	As Req.



Size (cm)	Size (inch)	Product Code	Std. Pkg. (Nos.)
8.0	3	M052803208	12
10.0	4	M052803209	08



Size (cm)	Size (inch)	Product Code	Std. Pkg. (Nos.)
2.0	3/4	M0528012702	600
2.5	1	M0528012703	350



Size (cm)	Size (inch)	Product Code	Std. Pkg. (Nos.)
6.5	2 1/2	853-025*	-
8.0	3	M052803108	20
10.0	4	M052803109	12
15.0	6	853-060*	-



Size (cm)	Size (inch)	Product Code	Std. Pkg. (Nos.)
1.5 - 3.2	1/2 - 1 1/4	TTOOLS-1	As Req.



METAL STRAP

HSN CODE: 7301

Size (cm)	Size (inch)	Product Code	Std. Pkg. (Nos.)
1.5	½	PVC9120M	800
2.0	¾	PVC9340M	500
2.5	1	PVC9100M	400
3.2	1¼	PVC9105M	300
4.0	1½	PVC9106M	250
5.0	2	PVC9200M	200



PTFE TAPE

HSN CODE: 3919

Size (Mtr.)	Product Code	Std. Pkg. (Nos.)
5	PTFE-1205	As Req.
10	PTFE-1210	As Req.
20	PTFE-1220	As Req.



BONDSET FAST SETTING

HSN CODE: 3214

Qty. (gm)	Product Code	Std. Pkg. (Nos.)
50	BONDSETFS-50	As Req.
100	BONDSETFS-100	As Req.

uPVC SOLVENT CEMENT & PRIMER



**uPVC 705
MEDIUM BODIED**

HSN CODE: 3506

Qty. (ml)	Product Code	Std. Pkg. (Nos.)
50 ml	TIPS50P705	48
118 ml	TIPS118P705	24
237 ml	TIPS237P705	24
473 ml	TIPS473P705	12
946 ml	TIPS946P705	12



**uPVC 735
MEDIUM BODIED**

HSN CODE: 3506

Qty. (ml)	Product Code	Std. Pkg. (Nos.)
473 ml	MIPS473P735	12
946 ml	MIPS946P735	12



**uPVC 705
TUBE
MEDIUM BODIED**

HSN CODE: 3506

Qty. (ml)	Product Code	Std. Pkg. (Nos.)
22.17 ml	TIPS2217P705	48
44 ml	TIPS44P705	24



**P-70 PRIMER
MEDIUM BODIED**

HSN CODE: 3506

Qty. (ml)	Product Code	Std. Pkg. (Nos.)
473 ml	TEZ-221	12
946 ml	TEZ-220	12



Qty. (ml)	Product Code	Std. Pkg. (Nos.)
473 ml	TIPS473P717	12
946 ml	TIPS946P717	12



Size (Ft.)	Product Code	Std. Pkg. (Nos.)
5	RSCU-TAPE-05-CLR	120
5	RSCU-TAPE-05-RED	120
5	RSCU-TAPE-05-BLK	120
10	RSCU-TAPE-10-CLR	120
10	RSCU-TAPE-10-RED	120
10	RSCU-TAPE-10-BLK	120
15	RSCU-TAPE-15-CLR	120
15	RSCU-TAPE-15-RED	120
15	RSCU-TAPE-15-BLK	120

WIDEST RANGE OF PRODUCTS

PLUMBING PIPES & FITTINGS

CPVC PRO

Pex-a PRO

Aquarius

SEWERAGE DRAINAGE PIPES & FITTINGS

Silencio

DrainMaster

Foamcore

DrainHulk

Underground

D-Rex

RexTP

AGRICULTURE PIPES & FITTINGS

Bore-Well

Case-Well

Aquasafe

AquaRex

Geo-Rex

SURFACE DRAINAGE SYSTEM

Hauraton

INDUSTRIAL PIPES & FITTINGS

Chem PRO

Aquarius Plus

FIRE SPRINKLERS PIPES & FITTINGS

Fire PRO

CABLE PROTECTION

Wire Guard

TeleRex

URBAN INFRASTRUCTURE

Plus+StiRex

Pre-StiRex

INSULATION TUBE

Insu PRO

